



BRAMPTON
PARK



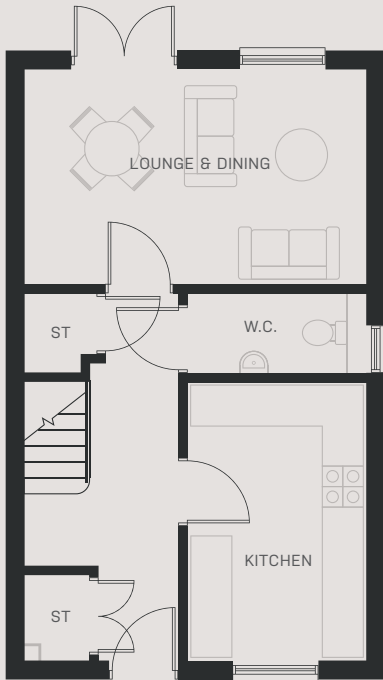
3 BEDROOM SEMI-DETACHED

THE BAXTER

The Baxter is a carefully crafted 3 bedroom semi-detached home, featuring an en-suite bathroom, open plan lounge and dining area and off-street parking.

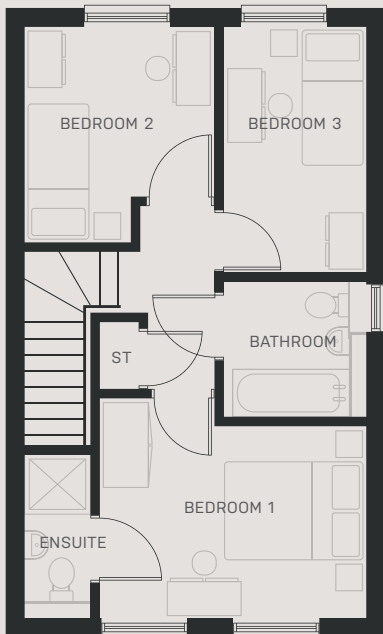
THE BAXTER

FLOORPLAN



Ground Floor

Room	Dimensions (m)	m ²	ft ²
Lounge & Dining	4.87 x 3.11	15.01	161.5
Kitchen	2.57 x 4.03	10.27	110.6



First Floor

Room	Dimensions (m)	m ²	ft ²
Bedroom 1	3.84 x 2.78	11.33	121.9
Ensuite	0.92 x 2.36	1.91	20.6
Bedroom 2	2.72 x 3.08	7.61	81.9
Bedroom 3	2.04 x 3.54	7.22	77.7
Bathroom	1.82 x 1.96	3.54	38.1

FOR DETAILS VISIT

METROPOLITANBRAMPTONPARK.CO.UK

* Drawings are not to scale. Dimensions, roof styles, elevation and specifications may vary from plot to plot. Measurements are approximations only. Metric measurements are rounded up. Please refer to a sales consultant for more details. Photographs and illustrations depict similar styled interiors, exteriors and fittings and are provided to give a general representation for the guidance of intending purchasers. As part of our commitment to continuous improvement Metropolitan reserves the right to change details from time to time if necessary. ©Metropolitan 2018.

