



BRAMPTON  
PARK



4 BEDROOM DETACHED

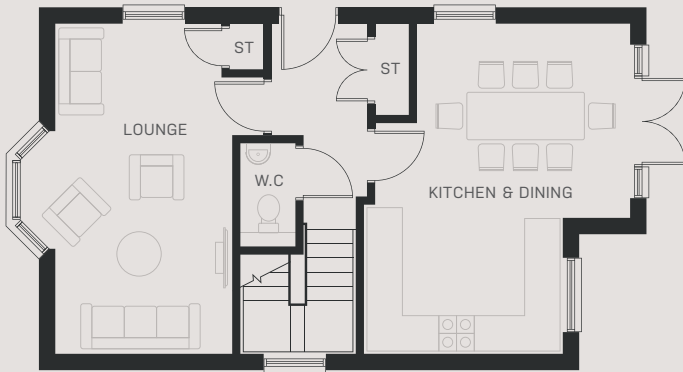
# THE MANDEVILLE

---

The Mandeville is a spectacular 4 bedroom, 3 storey, detached home. Featuring a spacious kitchen & diner with french doors, four bathrooms, generously proportioned bedrooms and off-street parking.

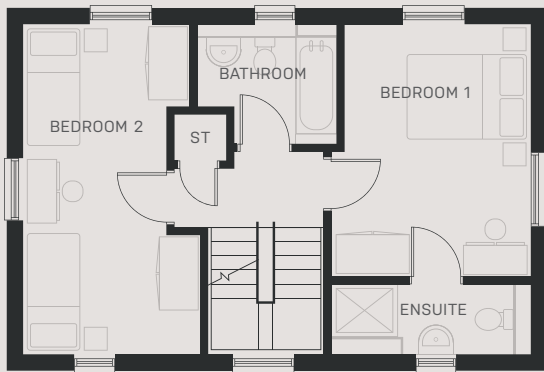
# THE MANDEVILLE

## FLOORPLAN



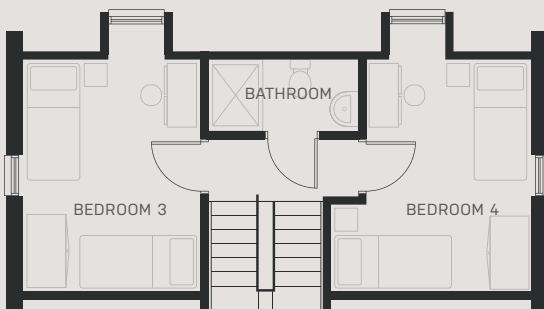
### Ground Floor

Room	Dimensions (m)	m <sup>2</sup>	ft <sup>2</sup>
Lounge	3.26 x 5.47	16.7	179.8
Kitchen & Dining	3.54 x 5.47	20.3	218.3



### First Floor

Room	Dimensions (m)	m <sup>2</sup>	ft <sup>2</sup>
Bedroom 1	3.31 x 4.17	13.6	146.4
Ensuite	3.06 x 1.17	3.2	34.9
Bedroom 2	2.92 x 5.47	14.9	160.2
Bathroom	2.33 x 1.77	3.7	39.5



### Second Floor

Room	Dimensions (m)	m <sup>2</sup>	ft <sup>2</sup>
Bedroom 3	2.94 x 3.88	11.7	126.0
Bedroom 4	3.31 x 3.88	11.2	120.8
Bathroom	2.51 x 1.22	2.7	28.9

FOR DETAILS VISIT

[METROPOLITANBRAMPTONPARK.CO.UK](http://METROPOLITANBRAMPTONPARK.CO.UK)

\* Drawings are not to scale. Dimensions, roof styles, elevation and specifications may vary from plot to plot. Measurements are approximations only. Metric measurements are rounded up. Please refer to a sales consultant for more details. Photographs and illustrations depict similar styled interiors, exteriors and fittings and are provided to give a general representation for the guidance of intending purchasers. As part of our commitment to continuous improvement Metropolitan reserves the right to change details from time to time if necessary. ©Metropolitan 2018.

